

K Installation documentation

for fuel removal with FuelFix

Mercedes Benz Sprinter

Left-hand drive vehicle

Manufacturer	Model	Type	Model year	EG-BE-No. / ABE
Mercedes Benz	Sprinter	907	from 2019	e1* 2007/46* 0301*...
Mercedes Benz	Sprinter	910	from 2019	e1* 2007/46* 0301*...

Motorisation	Fuel	Emission standard	Transmission type	Output [kW]	Displacement [cm ³]	Engine code
314 CDI	Diesel	Euro 6c	SG	105	2143	OM 651
316 CDI	Diesel	Euro 6c	SG	120	2143	OM 651
319 CDI	Diesel	Euro 6c	SG	140	2987	OM 642
319 CDI	Diesel	Euro 6c	AG	140	2987	OM 642

Validity	Equipment variants	Model
		Sprinter
Verified equipment variants	Vehicles with rear-wheel drive and manufacturer code KB7 (93l tank with tank fitting ID.: A9074702400)	x
	Vehicles with front-wheel drive and manufacturer code KB8 (92l tank with tank fitting ID.: A9104701900)	x

Total installation time	Note
0.5 hours	

Contents

1	List of abbreviations	3
2	Installation notes	4
2.1	Information on Validity	4
2.2	Components used	4
2.3	Validity notes	4
2.4	Information on total installation time	4
3	About this document	5
3.1	Purpose of the document	5
3.2	Warranty and liability	5
3.3	Safety	5
3.4	Using this document	6
4	Technical Information	7
5	Preparations	8
5.1	Vehicle preparation	8
6	FuelFix installation	9
7	FuelFix template for vehicles with rear-wheel drive (93l tank)	15
8	FuelFix template for vehicles with front-wheel drive (92l tank)	17

1 List of abbreviations

AG	Automatic transmission
Fig.	Figure
SG	Manual transmission
Veh.	Vehicle

2 Installation notes

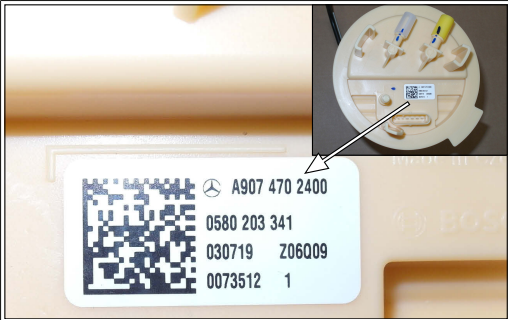

2.1 Information on Validity

This installation documentation applies to vehicles listed on page 1, assuming technical modifications to the vehicle do not affect installation, any liability claims excluded.



Vehicle and engine types, equipment variants and other specifications not listed in this installation documentation have not been tested. The installation is not permitted.

2.2 Components used

Designation	Order number
Additional tank extraction kit for Mercedes Benz Sprinter TT-Evo diesel, only for:	1327808A
 <p>Veh. with rear-wheel drive and manufacturer code KB7 (93l tank with tank fitting ID.: A9074702400)</p>	
 <p>Veh. with front-wheel drive and manufacturer code KB8 (92l tank with tank fitting ID.: A9104701900)</p>	

2.3 Validity notes

This installation documentation applies only in combination with:

Designation	Order number
Installation kit (incl. cold start system and 'Webasto Standard' A/C control) for Mercedes Benz Sprinter 2018 diesel motorcaravan	1326883_
Installation documentation for Mercedes Benz Sprinter 2018 diesel motorcaravan	1326884_

or

Installation kit for Mercedes Benz Sprinter 2018 AT 2000STC diesel	1326881_
Installation documentation for Mercedes Benz Sprinter 2018 AT 2000STC diesel	1326882_

2.4 Information on total installation time

The total installation time includes the time needed for mounting and demounting the vehicle-specific components and all other times required for the installation of the tank extraction device with FuelFix. The total installation time may vary for vehicle equipment other than provided.

3 About this document

3.1 Purpose of the document

This installation documentation is part of the product and contains all the information required to ensure professional vehicle specific installation of the:

Thermo Top Evo heater Motorcaravan

3.2 Warranty and liability

Webasto shall assume no liability for defects, damage and injuries resulting from a failure to observe the installation, repair and operating instructions of the information contained in them.

This liability exclusion particularly applies to improper installations and repairs by untrained persons or in the case of a failure to use genuine spare parts.

The liability due to culpable disregard to life, limb or health and due to damage or injuries caused by a wilful or reckless breach of duty remain unaffected, as does the obligatory product liability.

Installation should be carried out according to the general, standard rules of technology. Unless specified otherwise, fasten hoses, lines and wiring harnesses to original vehicle lines and wiring harnesses using cable ties. Insulate loose wire ends and tie back. Connectors on electronic components must audibly snap into place during assembly.

Spray unfinished body areas, e.g. drilled holes, with anti-corrosion wax (Tectyl 100K).

Observe the instructions and guidelines of the respective vehicle manufacturer for demounting and mounting vehicle specific components.

The initial start-up is to be executed with the Webasto Thermo Test Diagnosis.

When installing a programmable control module (e.g. a PWM Gateway), the corresponding settings must be checked or adjusted.

3.2.1 Statutory regulations governing installation

The Thermo Top Evo heater has been type-tested and approved in accordance with ECE-R 10 (EMC) and ECE-R 122 (heater). The regulations of these guidelines are binding in the scope of the Directive 70/156/EEC and/or 2007/46/EC (for new vehicle models from 29/04/2009) and should also be observed in countries in which there are no special regulations.

The heater is licensed in accordance with paragraph 19, section 3, No. 2b of the StVZO (German Road Traffic Licensing Authority).

3.3 Safety

Qualifications of installation personnel

The installation personnel must have the following qualifications:

- Successful completion of Webasto training
- Corresponding qualification for working on technical systems

Regulations and legal requirements

The regulations from the heater's general installation and operating instructions must be observed.

3.3.1 Safety information on installation

Danger posed by live parts

- ▶ Prior to installation, disconnect the vehicle from the voltage supply.
- ▶ Make sure the electrical system is earthed correctly.
- ▶ Always comply with legal requirements.
- ▶ Observe data on type label.

Danger of fire and leaking toxic gases due to improper installation

- ▶ Vehicle parts in the vicinity of the heater must be protected against excessive heating by the following measures:
 - ⇒ Maintain minimum safety distances.
 - ⇒ Ensure adequate ventilation.
 - ⇒ Use fire-resistant materials or heat shields.

Danger due to sharp edges

- Lacerations
- Short circuit due to electrical wire damage
- ▶ Fit protectors on sharp edges.

3.4 Using this document

Before installing and operating the heater, read this installation documentation, the installation instructions of the heater, the operating instructions and supplementary sheets provided.

3.4.1 Explanatory Notes on the Document

There is an identification mark near the respective work step to allow you to quickly allocate the other applicable documents to the Webasto components to be installed:

Generally valid Webasto documentation	
Vehicle-specific installation documentation	
Vehicle-specific installation documentation of the cold start kit	
Webasto Comfort A/C control	
Webasto Standard A/C control	
Tank extracting device (e.g. FuelFix)	
Exhaust end fastener (EFIX)	
Combustion air intake silencer	
Spacer bracket (ASH)	

3.4.2 Use of symbols



DANGER

Type and source of the risk

Consequences: Failure to follow the instructions can result in death

► Actions to protect yourself against risks.



WARNING

Type and source of the risk

Consequences: Failure to follow the instructions can lead to serious or even fatal injuries

► Actions to protect yourself against risks.



CAUTION

Type and source of the risk

Consequences: Failure to follow the instructions can lead to minor injuries

► Actions to protect yourself against risks.



Type and source of the risk

Consequences: Failure to follow the instructions can lead to material damage

► Actions to protect yourself against risks.



Reference to the vehicle manufacturer's specific documents.



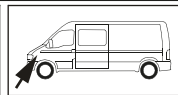
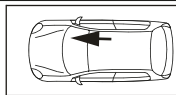
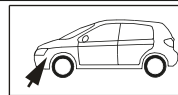
Note on a special technical feature

3.4.3 Work step identification marks

The ongoing work step is indicated on the outside top corner of the page:

Mechanical system	Electrical system	High-voltage	Coolant
Combustion air	Fuel	Exhaust	Software

3.4.4 Orientation aid



The arrow indicates the position on the vehicle and the viewing angle

3.4.5 Use of highlighting

Highlight	Explanation
✓	Action
►	Necessary action
⇒	Result of an action
1 / 12 / a1	Position numbers for the image descriptions
① / ⑫ / Ⓐ	Position numbers for the image descriptions for electrical wires and components as well as coolant hose sections

4 Technical Information

Dimension specifications

- All dimensions specified in mm
- Perforated brackets and mounting angles are shown to scale
- Observe data regarding scale on the templates

Tightening torque specifications

- Tighten bolt connections in accordance with manufacturer's instructions or in accordance with state-of-the-art-technology

Necessary special tools

- Hose clamp pliers for Clic hose clamps of type W
- Torque wrench for 2.0 - 10 Nm
- Deep-hole marker

5 Preparations

5.1 Vehicle preparation



Further information can be found in the vehicle manufacturer's technical documentation.

Vehicle area	Components to be removed	Other applicable documents
General	<ul style="list-style-type: none">▶ Open the fuel tank cap▶ Ventilate the fuel tank▶ Close the fuel tank cap again	



Carry out the following work only during the corresponding installation sequence:



DANGER

Risk of fire and explosion due to leaking fuel and escaping fuel vapours.

Vehicle body	<ul style="list-style-type: none">▶ Remove the fuel tank	
--------------	--	--



6 FuelFix installation



DANGER

Risk of fire and explosion due to leaking fuel and escaping fuel vapours.

The incorrect installation of the fuel extractor can cause damage and fire.

- ▶ Avoid electrostatic discharges and open fire
- ▶ When working on the fuel system, ensure sufficient ventilation and bleeding
- ▶ Open the fuel tank cap of the vehicle
- ▶ Ventilate the fuel tank
- ▶ Re-close the tank lock
- ▶ Catch any fuel running off with an appropriate container



Danger of damage to components

- ▶ Install fuel line and fuel pump wiring harness so that they are protected against stone impact
- ▶ Provide rub protection for fuel line and wiring harness in areas where there are sharp edges

Scope



The FuelFix can only be installed on tank fittings with the identification number **1** or **2** printed on the label.

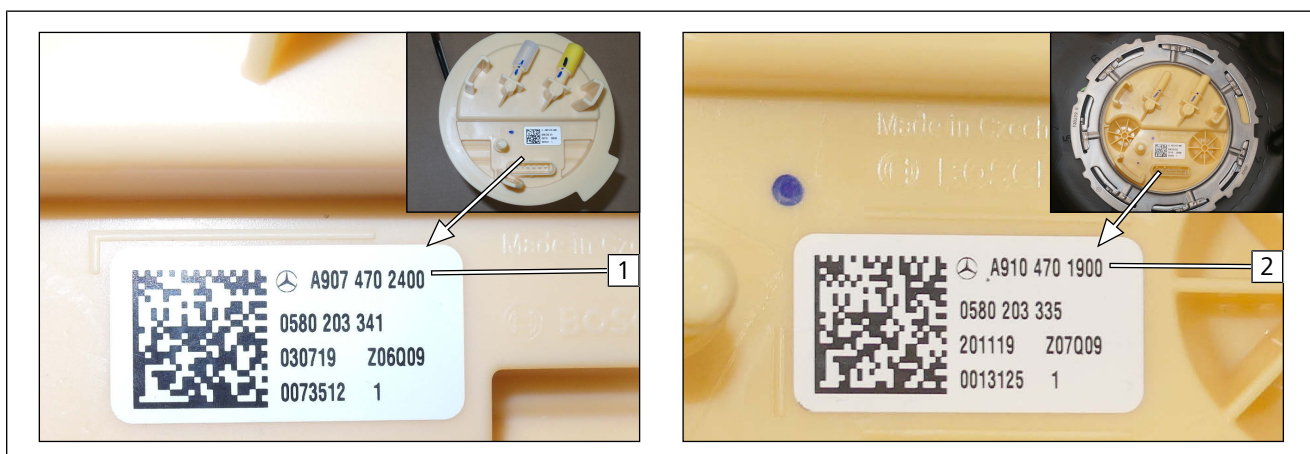


Fig. 1

Preparing drilling template

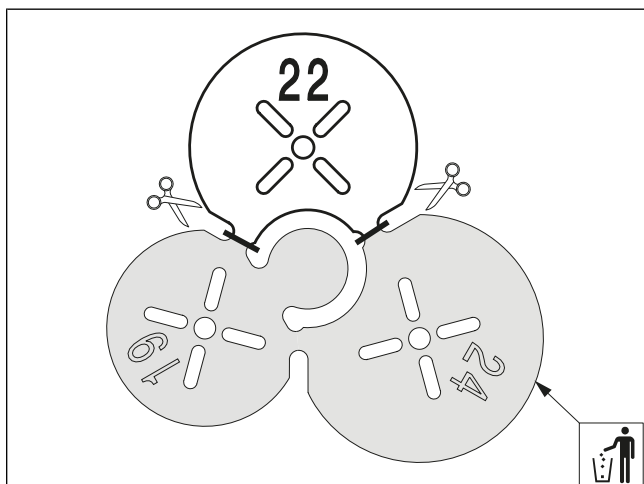


Fig. 2



All subsequent work steps are shown on a vehicle with manufacturer code KB8 (92l tank with tank fitting ID.: A9104701900) but apply to all vehicles.

Work steps F1, F2

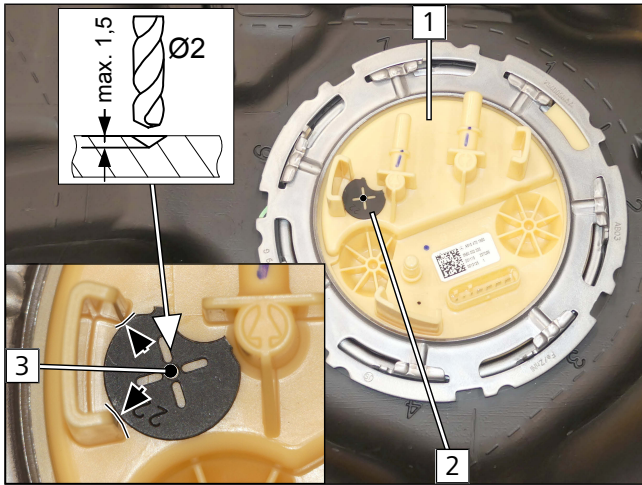


Fig. 3



Further information can be found in the vehicle manufacturer's technical documentation.

► Remove the fuel tank.



Observe the installation instructions of the tank extracting device.

► Position Ø22 drilling template **2** at the markings as shown in Fig.

- 1** Tank fitting
- 3** Ø2 centring hole

Work step F3

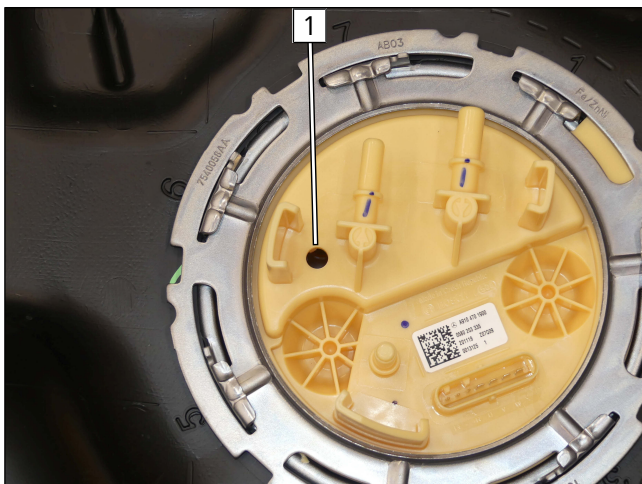


Fig. 4



DANGER

Risk of fire and explosion due to leaking fuel and escaping fuel vapours.

- 1** Hole made with provided drill

Work steps F4, F5



Fig. 5

► Bend FuelFix **1** according to template and cut to length. Insert in hole **2**.



Fig. 6



Fig. 7

Work steps F5.3, F5.4

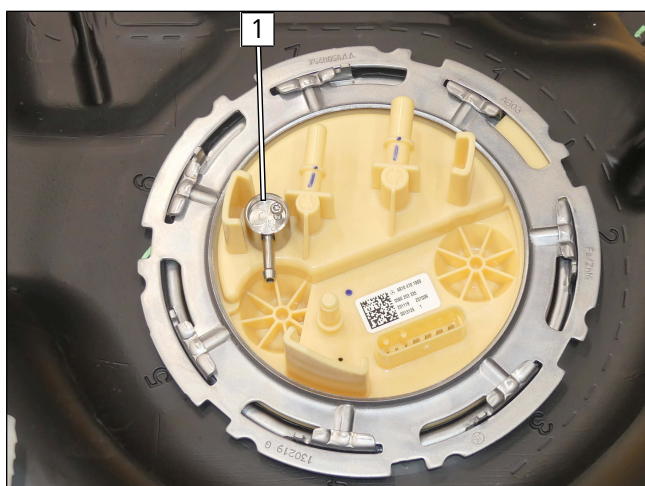


Fig. 8

► Align FuelFix **1** as shown.



Work step F6

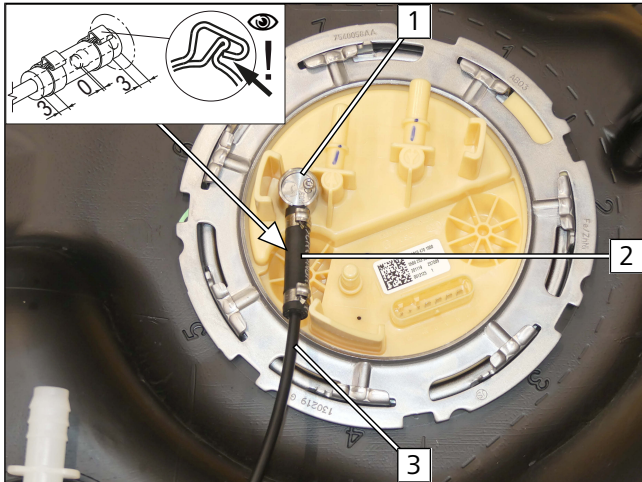


Fig. 9

- 1 FuelFix
- 2 Hose section, Ø10 clamp [2x]
- 3 Fuel line of FuelFix

Work step F7

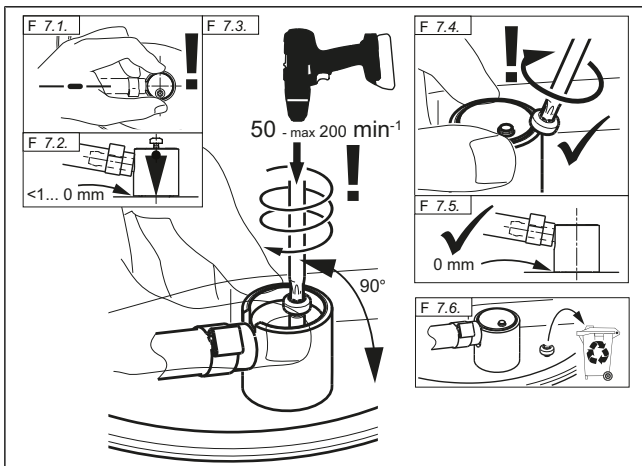


Fig. 10



DANGER

Risk of fire and explosion due to leaking fuel and escaping fuel vapours.

Work step F8



Fig. 11

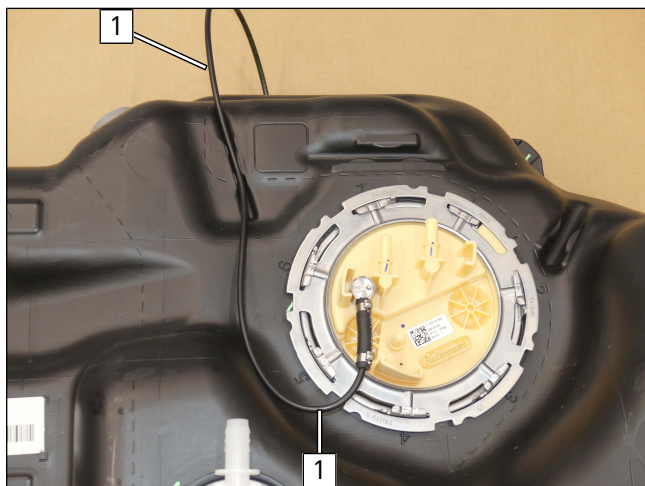


Fig. 12

- ▶ Fasten fuel line of FuelFix **1** in accordance with the installation conditions.



Further information can be found in the vehicle manufacturer's technical documentation.

- ▶ Mount tank.
- ▶ Route fuel line of FuelFix **1** to the fuel pump installation location in accordance with the installation conditions and fasten with cable ties for tension relief.

These are the original instructions. The German language is binding.
You can request your language if it is missing. The telephone number of each country can be found in the Webasto service centre leaflet or the website of the respective Webasto representative of your country.

Ident No. 1327809B_EN • 07/20 • Errors and omissions excepted • © Webasto Thermo & Comfort SE • 2020

Webasto Thermo & Comfort SE
Postfach 1410
82199 Gilching
Germany

Company address:
Friedrichshafener Str. 9
82205 Gilching
Germany

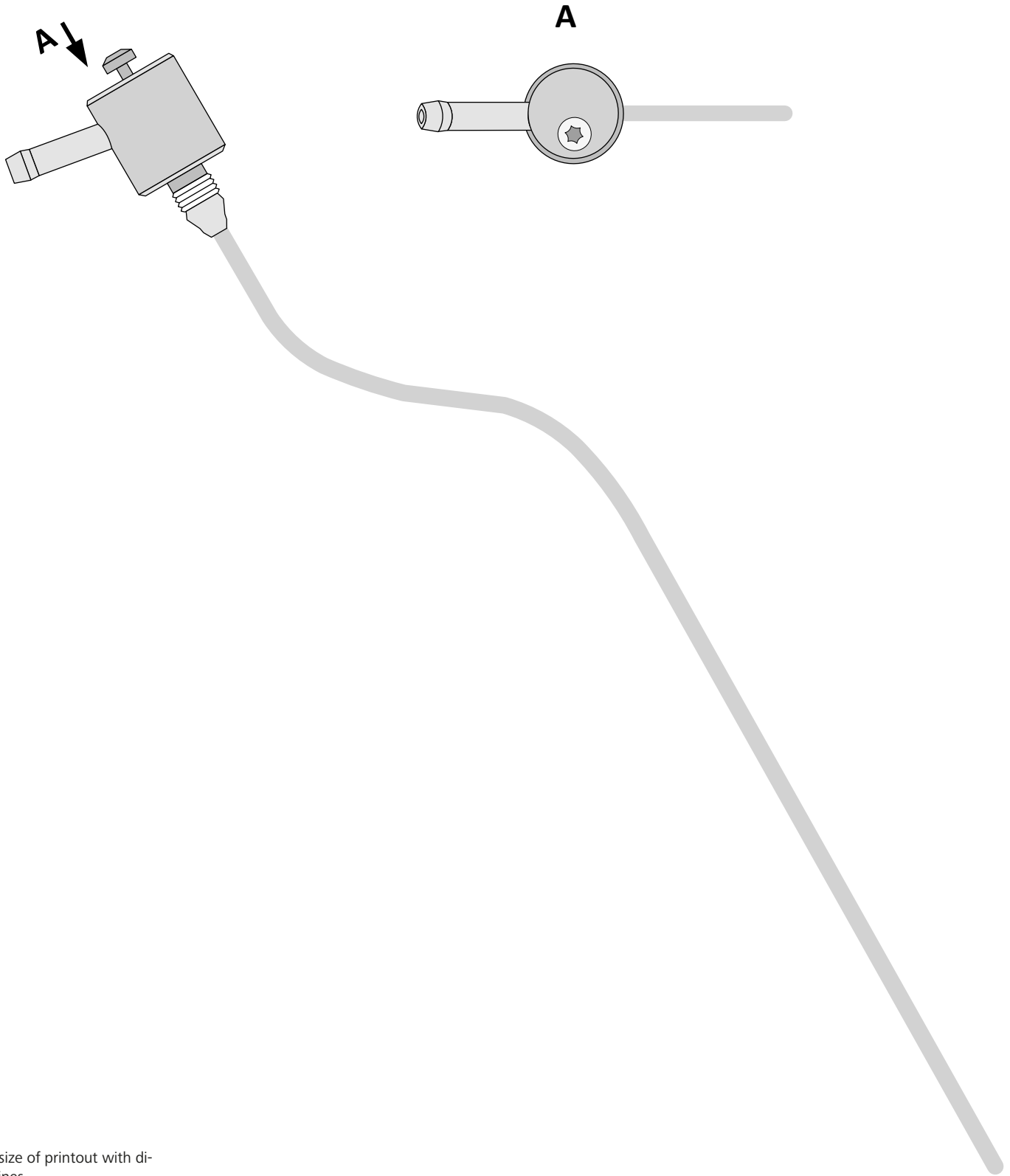
Technical Extranet: <https://dealers.webasto.com>



WWW.WEBASTO.COM



7 FuelFix template for vehicles with rear-wheel drive (93l tank)



100mm

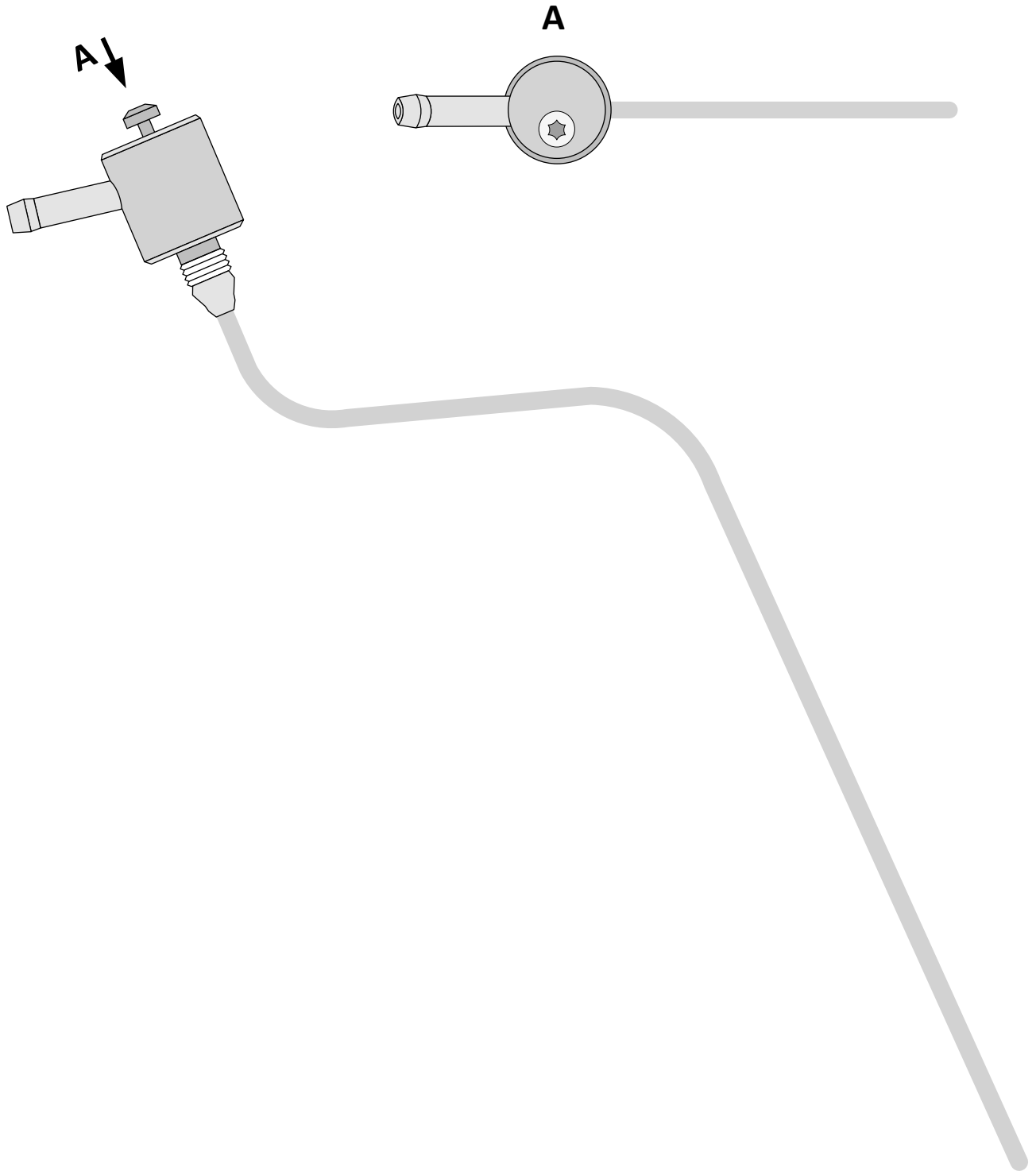
0

100mm

Scale 1:1
Compare size of printout with dimension lines.
Maximum permitted tolerance 2%.
Set the printer settings to no 'margin' or 'minimise margins' and 100% of the normal size.



8 FuelFix template for vehicles with front-wheel drive (92l tank)



100mm

0

100mm

Scale 1:1
Compare size of printout with dimension lines.
Maximum permitted tolerance 2%.
Set the printer settings to no 'margin' or 'minimise margins' and 100% of the normal size.

