

Update Instruction

For Webasto Heaters

Content

Preface:.....	1
Hardware preparation:.....	2
Heater application:.....	2
PC requirements:.....	3
PC installation:.....	3
Update tool software preparation:	4
Update process:	5
Trouble shooting:	7
Heater not updatable (wrong configuration/ heater already up to date):.....	7
Abortion of update process by the tool:.....	8
Error message "Invalid ECU address!":.....	8
Tool restart procedure:.....	8

Preface:

This instruction describes the required steps to update Webasto heaters with the latest software.

IMPORTANT NOTE:

- As a flash process always contains potential risk please make sure no other applications are running while the update process is active!
- Do NOT start the update tool from an USB device/ network drive! Use your local hard drive only!
- Once the update is started do NOT interrupt the process nor disconnecting the lines!
- Disturbing the update procedure may lead to a defective heater!
- For the installation of the USB driver you will need administrator rights.



Hardware preparation:

Heater application:

- Connect Webasto USB diagnosis adaptor 9008487 to heater

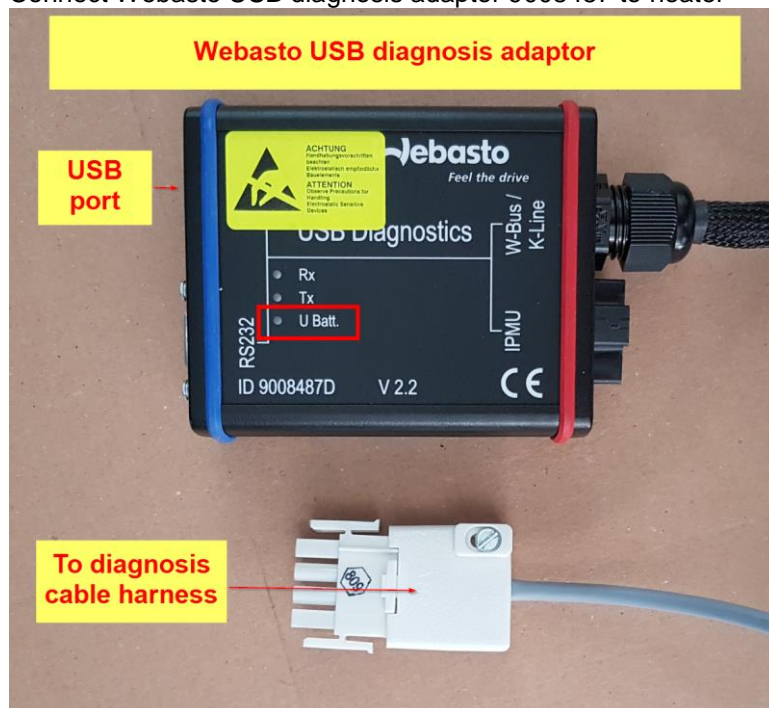


Fig. 1: Webasto USB diagnosis adaptor 9008487

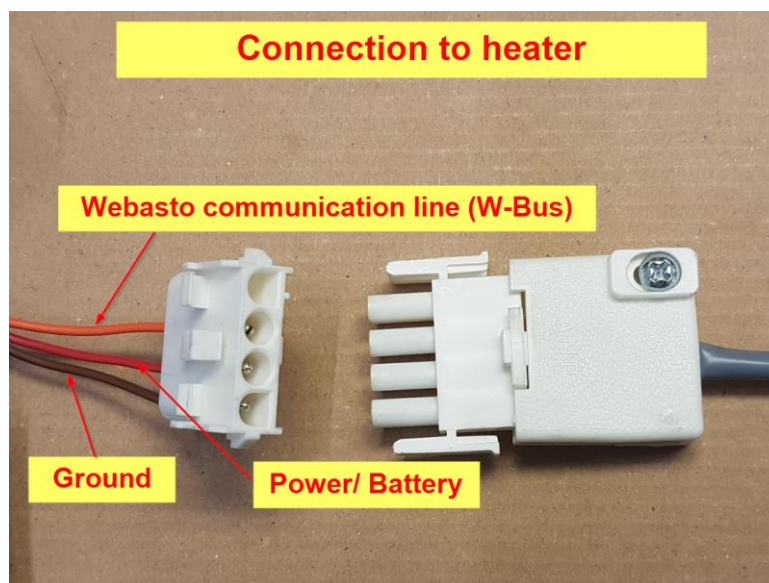


Fig. 2: Connection to Webasto heater

- Check U_{Batt} light of diagnosis adaptor (needs to light green, if not, check connectors)

PC requirements:

- OS: WIN10 64bit
- Interface: USB 2.0 (RS232 does not work with update tool)
- Administrative rights for the driver installation only

PC installation:

- This step is not necessary if the Webasto Thermo Test diagnosis (WTT) has already been installed.
- If a file **USB_Driver.zi_** has been delivered, please rename it to **USB_Driver.zip**.
- Extract the delivered file **USB_Driver.zip** to a folder on your **local disc** using password “webasto”.

(In case of trouble extracting the zip file you can download the free 7zip tool from www.7-zip.org)

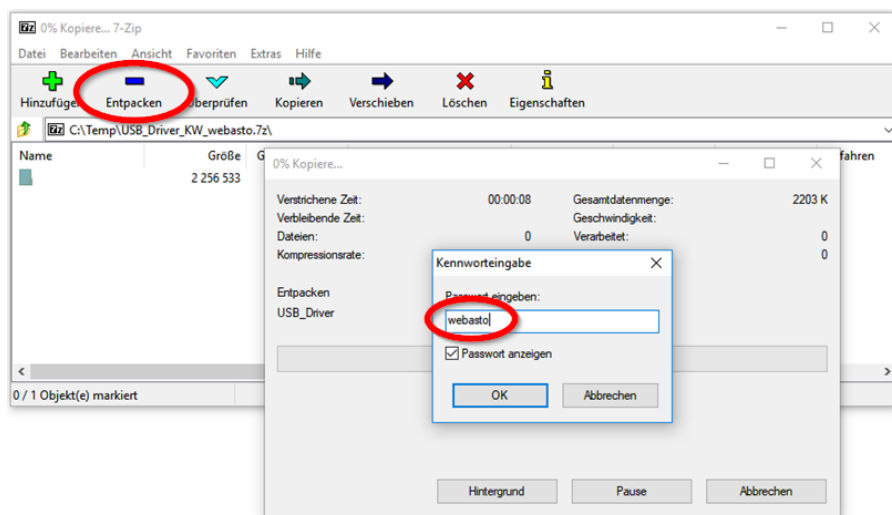


Fig. 3: Driver ZIP container is protected by password “webasto”

- Start the **dpinstx64.exe**
- Follow the instructions
- After the installation is done connect Webasto USB diagnosis adaptor 9008487 to PC using USB cable
(see also *USB Diagnosis adapter – driver installation.pdf*)

Update tool software preparation:

- If a file **UpdaterNamexxx.zi_** has been delivered, please rename it to **UpdaterNamexxx.zip**.
- Extract the delivered file **UpdaterNamexxx.zip** to a folder on your local disc using password "**webasto**".

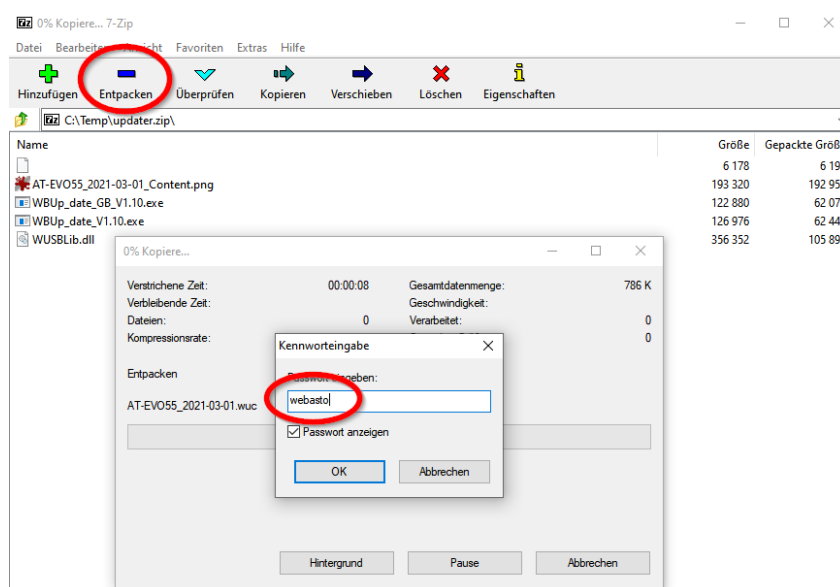


Fig. 4: Update ZIP container is protected by password "webasto"

Update process:

- Start update tool **WBUp_date_GB_V1.10.exe (WBUp_date_V1.10.exe)**
- If the hardware is connected as mentioned above, start update procedure by hitting “F2” key
- Follow the instructions of the tool

Name

- AT-EVO55_2021-03-01.wuc
- AT-EVO55_2021-03-01_Content.png
- WBUp_date_GB_V1.10.exe**
- WBUp_date_V1.10.exe
- WUSBLib.dll

Fig. 5: Start update tool

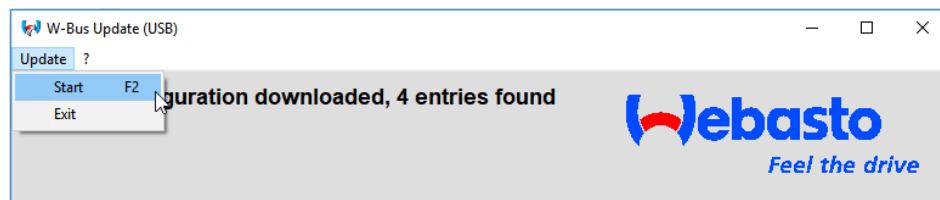


Fig. 6: Start update procedure (number of entries might differ)

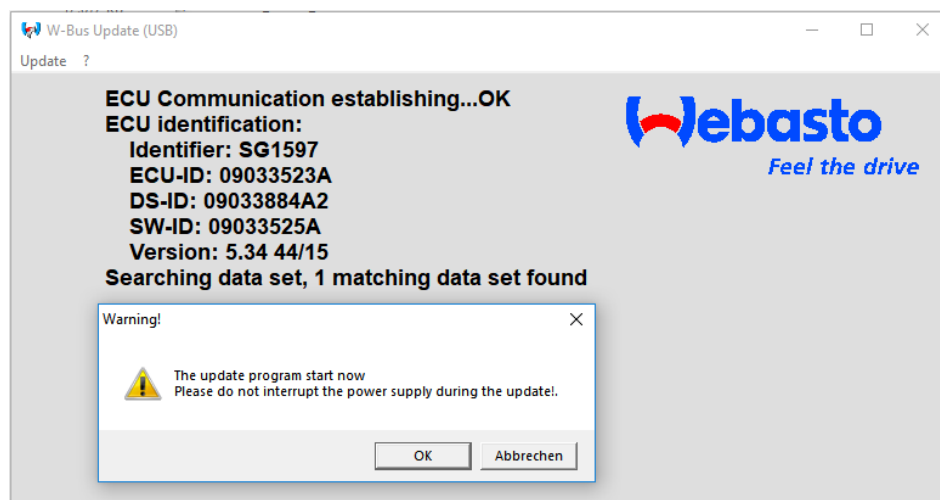


Fig. 7: Update in progress #1 (identification numbers as example)

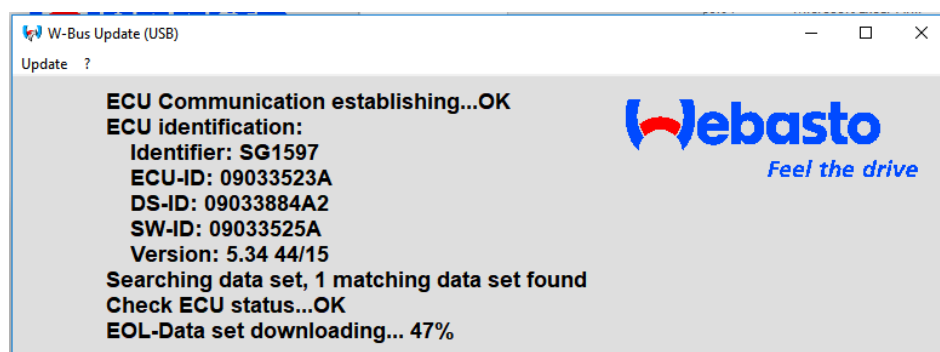


Fig. 8: Update in progress #2

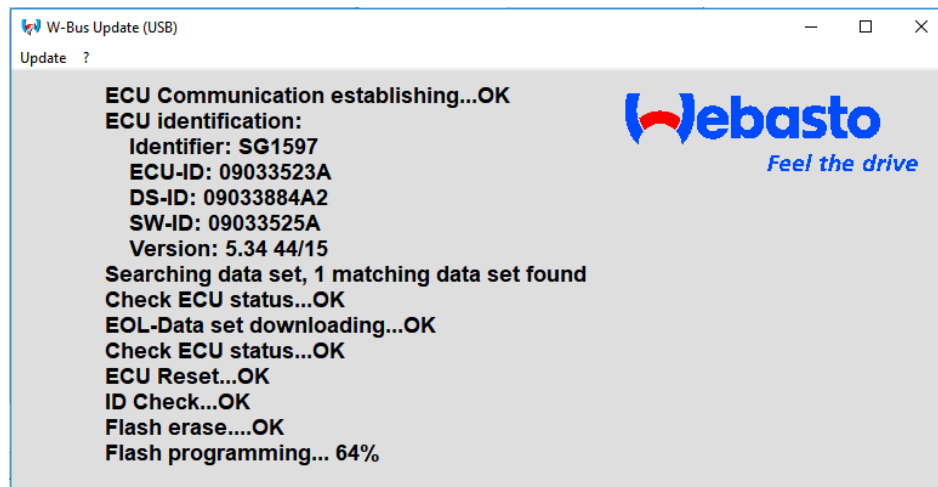


Fig. 9: Update in progress #3

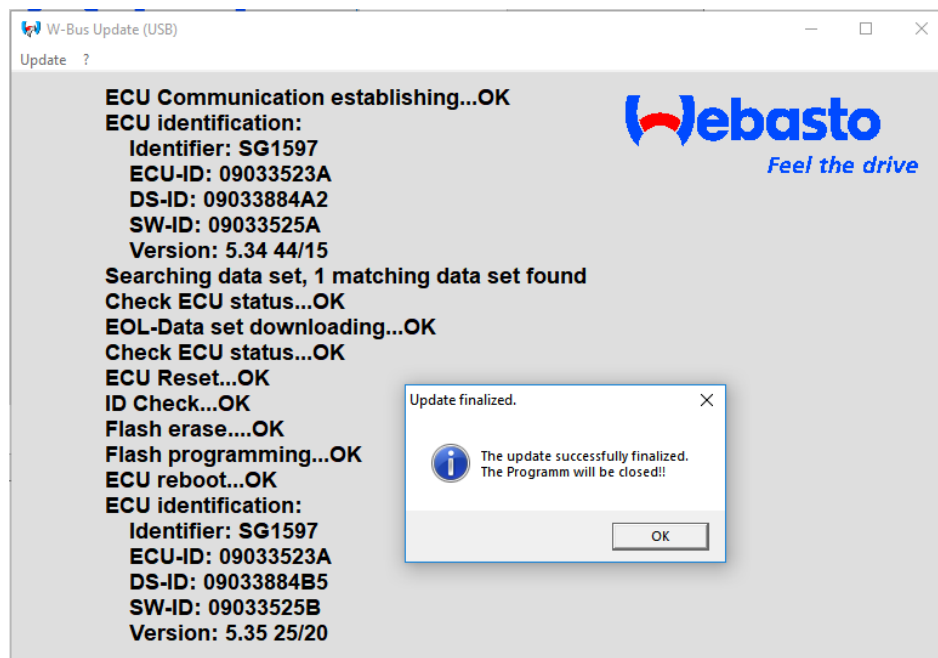


Fig. 10: Update in progress #4

- The update process will take up to four minutes! Please be patient (Depending on the heater not all steps listed above will be performed!)
- As soon as the update has been finished, you need to confirm the process. The update tool will be closed automatically
- For the next update process you need to restart the tool (WBUp_date_GB_V1.10.exe/ WBUp_date_V1.10.exe)

Trouble shooting:

Heater not updatable (wrong configuration/ heater already up to date):

- Check configuration to make sure that heater is not to be updated

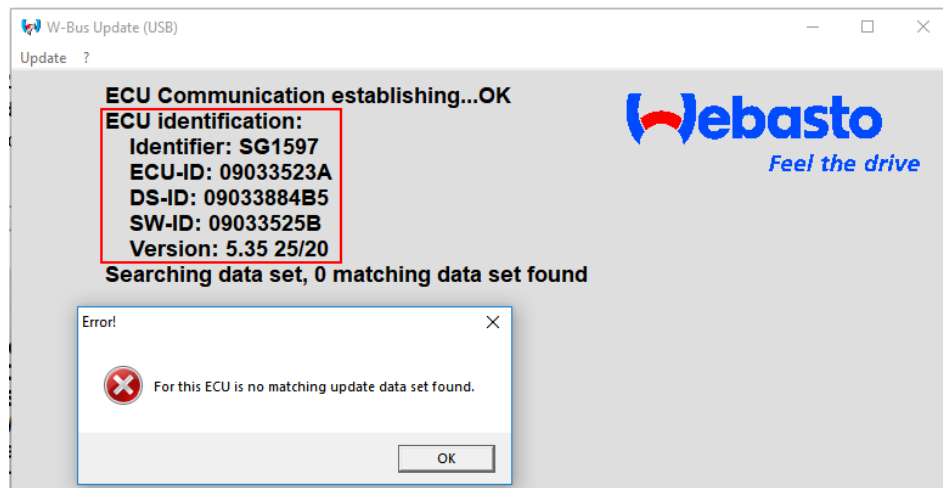


Fig. 11: Heater not updatable

- After confirming this message you need to close this window as it will not be done automatically. Otherwise you will get an error message to use an USB interface.

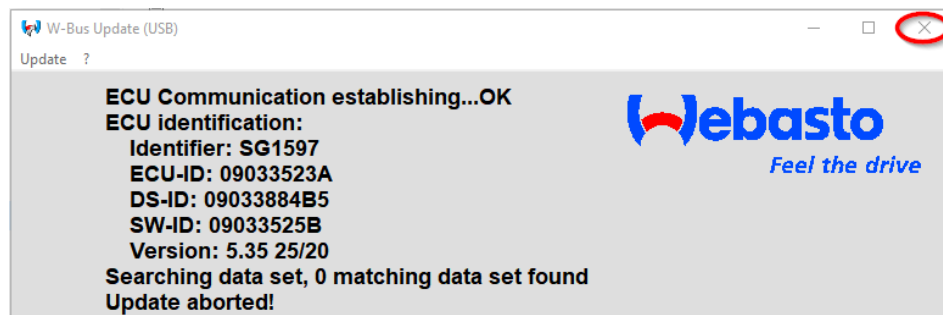


Fig. 12: Close window manually

Abortion of update process by the tool:

- If the update will be aborted by the tool due to communication problems:
 - Heater <> Webasto USB diagnosis adaptor as well as
 - PC <> USB diagnosis adaptor
 please perform the steps described in “Tool restart procedure” below. Dependent on the already done progress of the update process that might help.

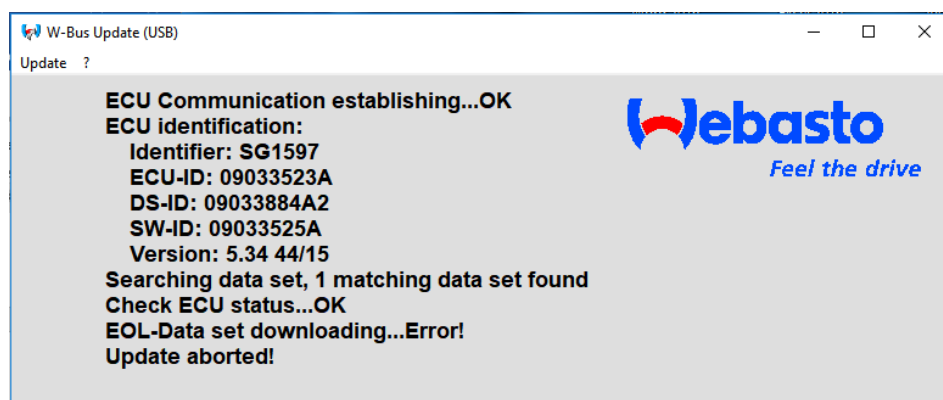


Fig. 13: Update aborted

Error message “Invalid ECU address!”:

- Please see “Tool restart procedure” below

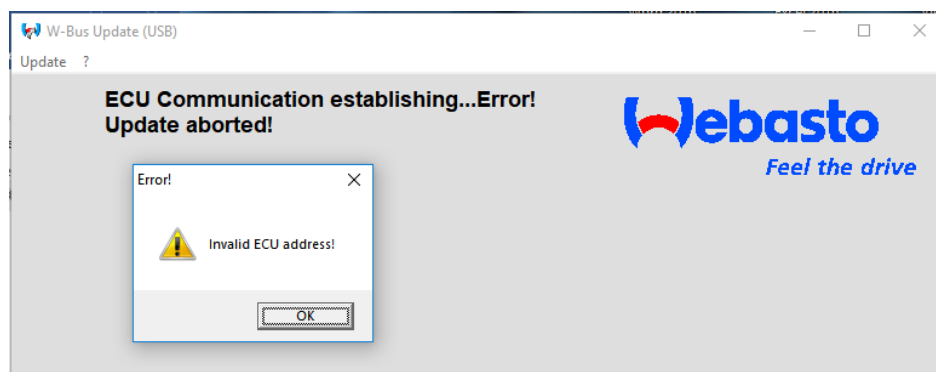


Fig. 14: Error message “Invalid ECU address!”

Tool restart procedure:

- If the program does not start correctly or error messages appear the following steps might be helpful:
 - Close the tool,
 - Disconnect the USB cable,
 - Reset the power supply of heater and diagnosis adaptor for more than 10s,
 - Reconnect the USB cable,
 - Start the update tool again.